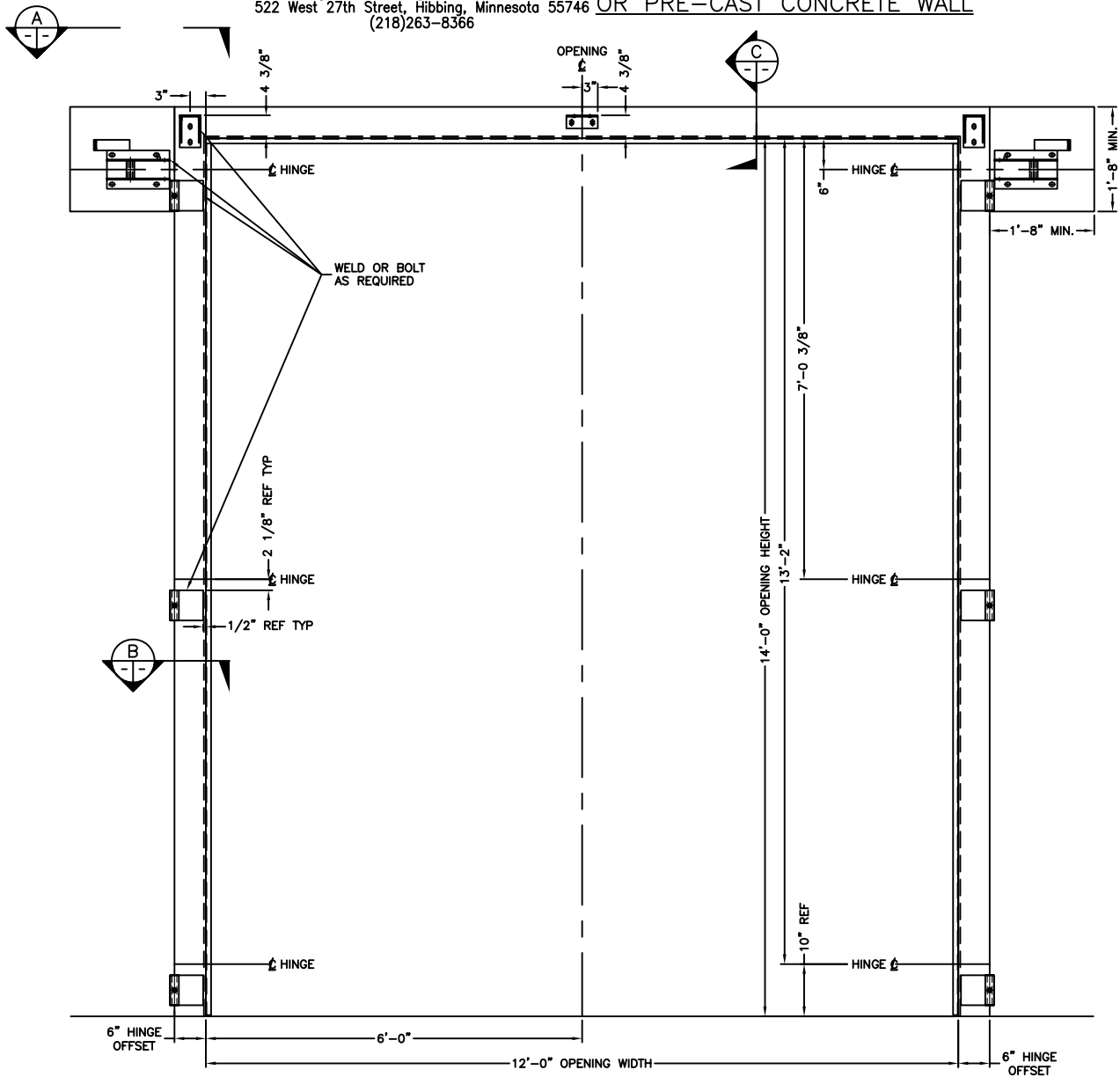


*Engineering in motion*

522 West 27th Street, Hibbing, Minnesota 55746  
(218)263-8366

HYDRAULIC FOUR-FOLD TEMPLATE  
FOR 2" THICK W/CHANNEL TRACK  
12'-0"W X 14'-0"H  
EMBEDDED IN Poured IN-PLACE  
OR PRE-CAST CONCRETE WALL



FRAME TEMPLATE & HARDWARE PLACEMENT

HINGE SIDE ELEVATION  
6" HINGE OFFSET, EMBEDDED STEEL FRAME