

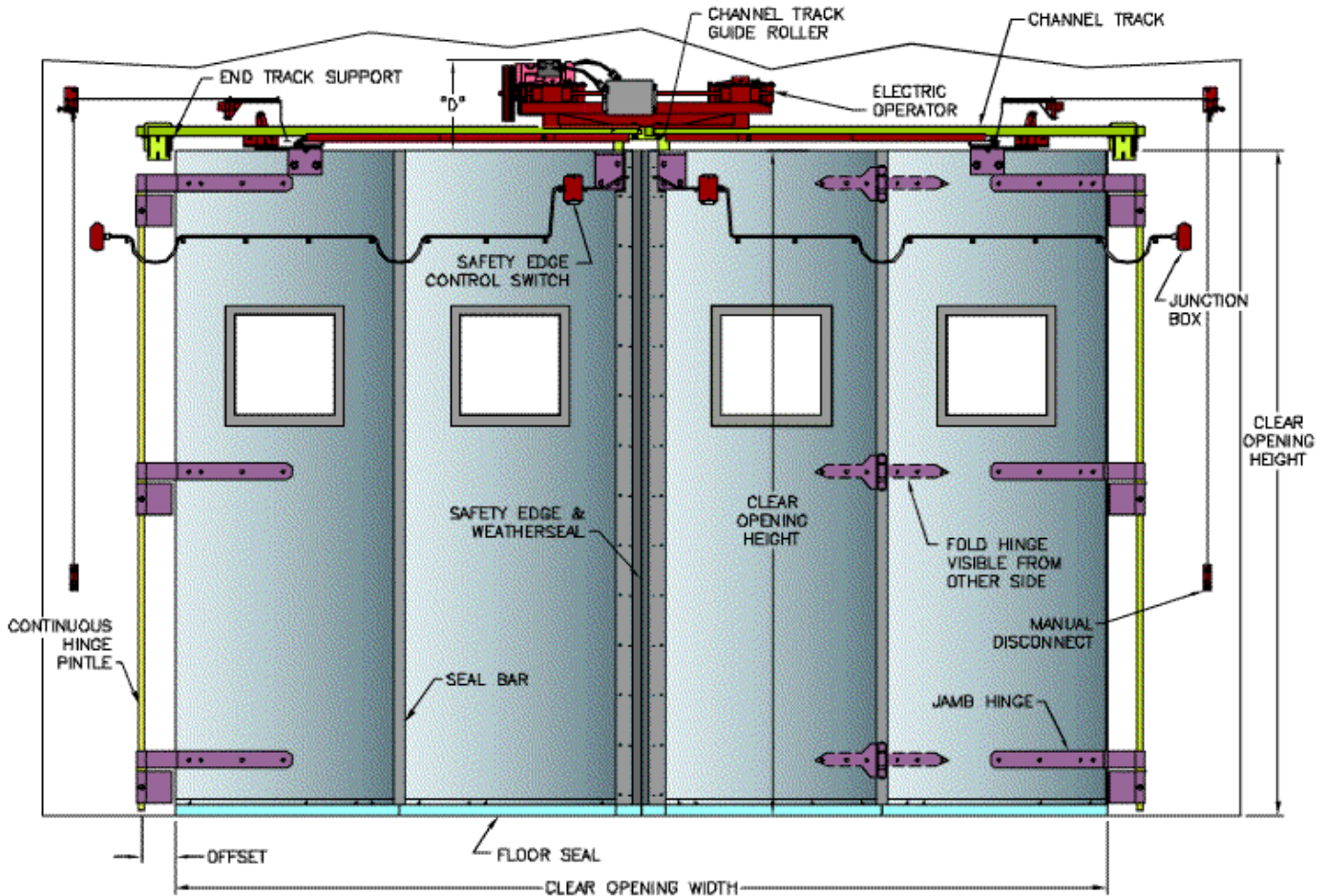
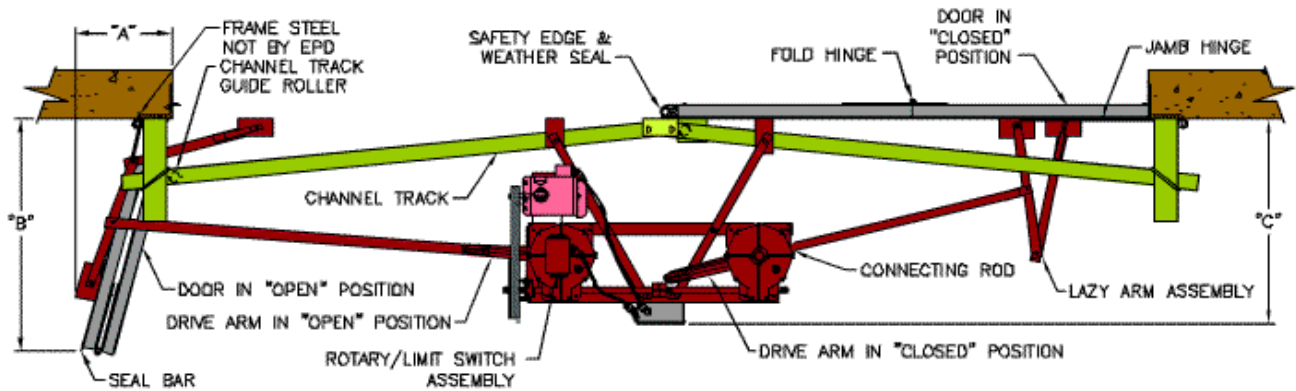
EPD Model 41

Glazed Four-Folds

with Electric Gearbox Operator

Gearbox Operator Dimensions & Data

ELECTRIC FOUR-FOLD DOOR STANDARD 14GA. SHEETING W/LITES



Note: Door panel thickness is based on 20 pound per square foot load with L/120 deflection.



EPD Electric Operator Details & Dimensions

Door Size			Door Panel Thickness	Clearances				Track Offset	Maximum Time To Open	Motor Horse Power	Guide Track Type	Operator Size
Width	x	Height		A	B	C	D					
8'-0"		8' to 12'	2"	15"	2'-7"	32"	17"	6"	5 Sec.	1/2 HP	Channel	ED-00
9'-0"		8' to 12'	2"	15"	2'-10"	32"	17"	6"	5 Sec.	1/2 HP	Channel	ED-00
10'-0"		8' to 12'	2"	15"	3'-1"	32"	17"	6"	5 Sec.	1/2 HP	Channel	ED-00
10'-0"		13' to 14'	2"	17"	3'-1"	36"	17"	6"	7 Sec.	3/4 HP	Channel	ED-1&2
11'-0"		12' to 14'	2"	17"	3'-4"	36"	17"	6"	7 Sec.	3/4 HP	Channel	ED-1&2
12'-0"		12' to 14'	2"	17"	3'-7"	36"	17"	6"	7 Sec.	3/4 HP	Channel	ED-1&2
13'-0"		12' to 14'	2"	17"	3'-10"	36"	17"	6"	7 Sec.	3/4 HP	Channel	ED-1&2
14'-0"		12' to 14'	2"	17"	4'-1"	36"	17"	6"	7 Sec.	3/4 HP	Channel	ED-1&2
14'-0"		14' to 16'	3"	18"	4'-3"	42"	17"	8"	9 Sec.	1 HP	S-Beam	ED-3&4
15'-0"		11' to 16'	3"	18"	4'-6"	42"	17"	8"	9 Sec.	1 HP	S-Beam	ED-3&4
16'-0"		11' to 16'	3"	18"	4'-9"	42"	17"	8"	9 Sec.	1 HP	S-Beam	ED-3&4
17'-0"		11' to 16'	3"	18"	5'-0"	42"	17"	8"	9 Sec.	1 HP	S-Beam	ED-3&4
18'-0"		11' to 16'	3"	18"	5'-3"	42"	17"	8"	9 Sec.	1 HP	S-Beam	ED-3&4

For smaller or larger door sizes, consult the EPD factory at (800) 346-5760.