



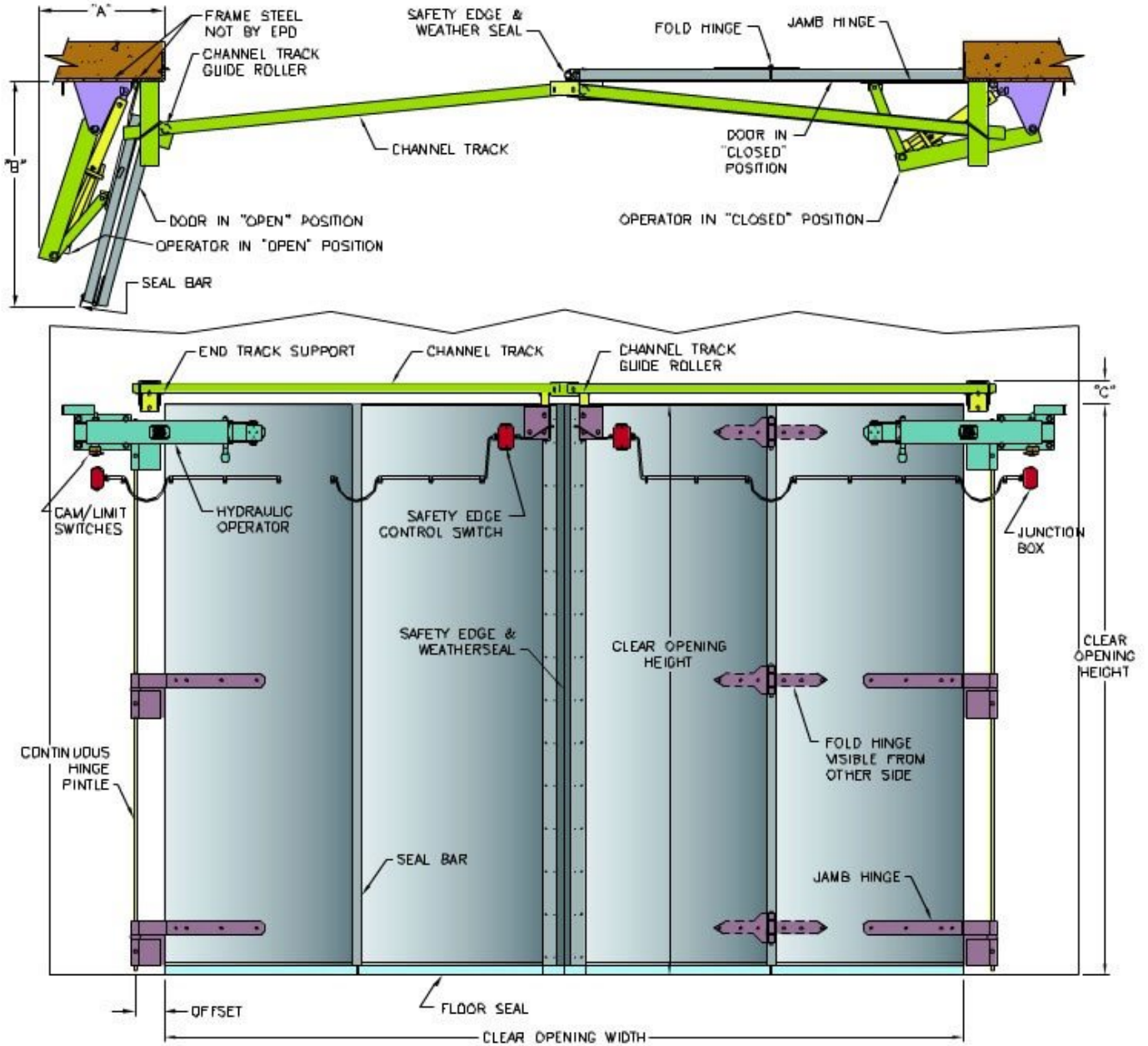
**ELECTRIC  
POWER DOOR**

# EPD Model 46

*Flat Sheeted Doors w/o Windows*  
with Hydraulic Jamb Mounted Operators

## Hydraulic Door Operator Dimensions & Data

### HYDRAULIC FOUR-FOLD MODEL 46 STANDARD 14 GA. FLAT SHEETED DOOR



**Note: Door panel thickness is based on 20 pound per square foot load with L/120 deflection.**



**ELECTRIC**  
POWER DOOR

**EPD Hydraulic Operator Details & Dimensions**

Door Size			Door Panel Thickness	Clearances			Hinge Offset	Maximum Time To Open	Motor Horse Power	Guide Track Type
Width	x	Height		A	B	C				
8'-0"		11' to 13'-6"	2"	28-1/2"	2'-9"	4-3/4"	6"	8 Sec.	2 HP	Channel
9'-0"		11' to 13'-2"	2"	28-1/2"	3'-0"	4-3/4"	6"	8 Sec.	2 HP	Channel
10'-0"		11' to 12'-10"	2"	28-1/2"	3'-3"	4-3/4"	6"	8 Sec.	2 HP	Channel
11'-0"		11' to 12'-6"	2"	28-1/2"	3'-6"	4-3/4"	6"	8 Sec.	2 HP	Channel
12'-0"		11' to 12'-2"	2"	28-1/2"	3'-9"	4-3/4"	6"	8 Sec.	2 HP	Channel
13'-0"		11' to 11'-10"	2"	28-1/2"	4'-0"	4-3/4"	6"	8 Sec.	2 HP	Channel
14'-0"		11' to 11'-6"	2"	28-1/2"	4'-3"	4-3/4"	6"	8 Sec.	2 HP	Channel
15'-0"		11' to 11'-2"	2"	28-1/2"	4'-6"	4-3/4"	6"	8 Sec.	2 HP	Channel
15'-11"		11' to 11'-0"	2"	28-1/2"	4'-9"	4-3/4"	6"	8 Sec.	2 HP	Channel
16'-0"		18'-8"	3"	28-1/2"	4'-11"	7-1/2"	8"	10 Sec.	2 HP	S-Beam
17'-0"		17'-6"	3"	28-1/2"	5'-3"	7-1/2"	8"	10 Sec.	2 HP	S-Beam
18'-0"		16'-4"	3"	28-1/2"	5'-7"	7-1/2"	8"	10 Sec.	2 HP	S-Beam
20'-0"		15'-2"	3"	28-1/2"	5'-11"	7-1/2"	8"	10 Sec.	2 HP	S-Beam

**For smaller or larger door sizes, consult the EPD factory at (800) 346-5760.**