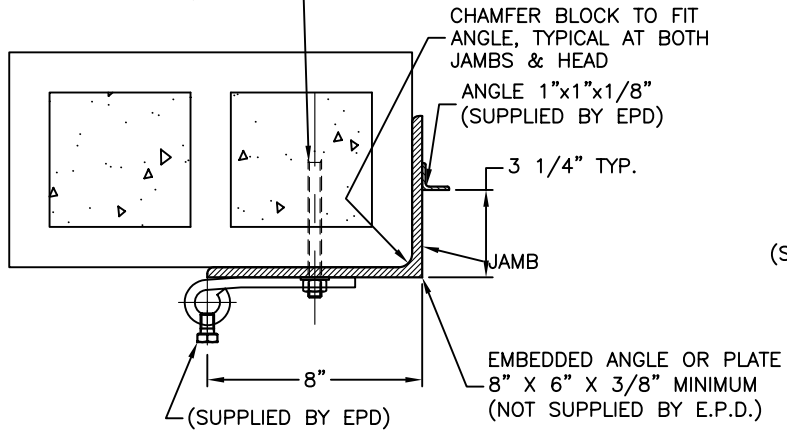
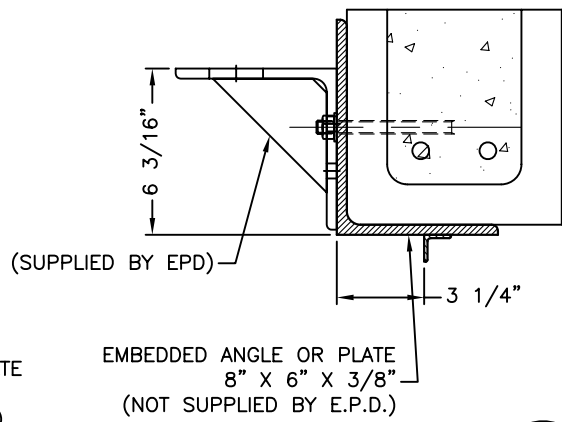


HILTI HSL-M-10/20 OR HSL-M-8/20
OR HIT-HY150 x 5/8" MIN.



SECTION A



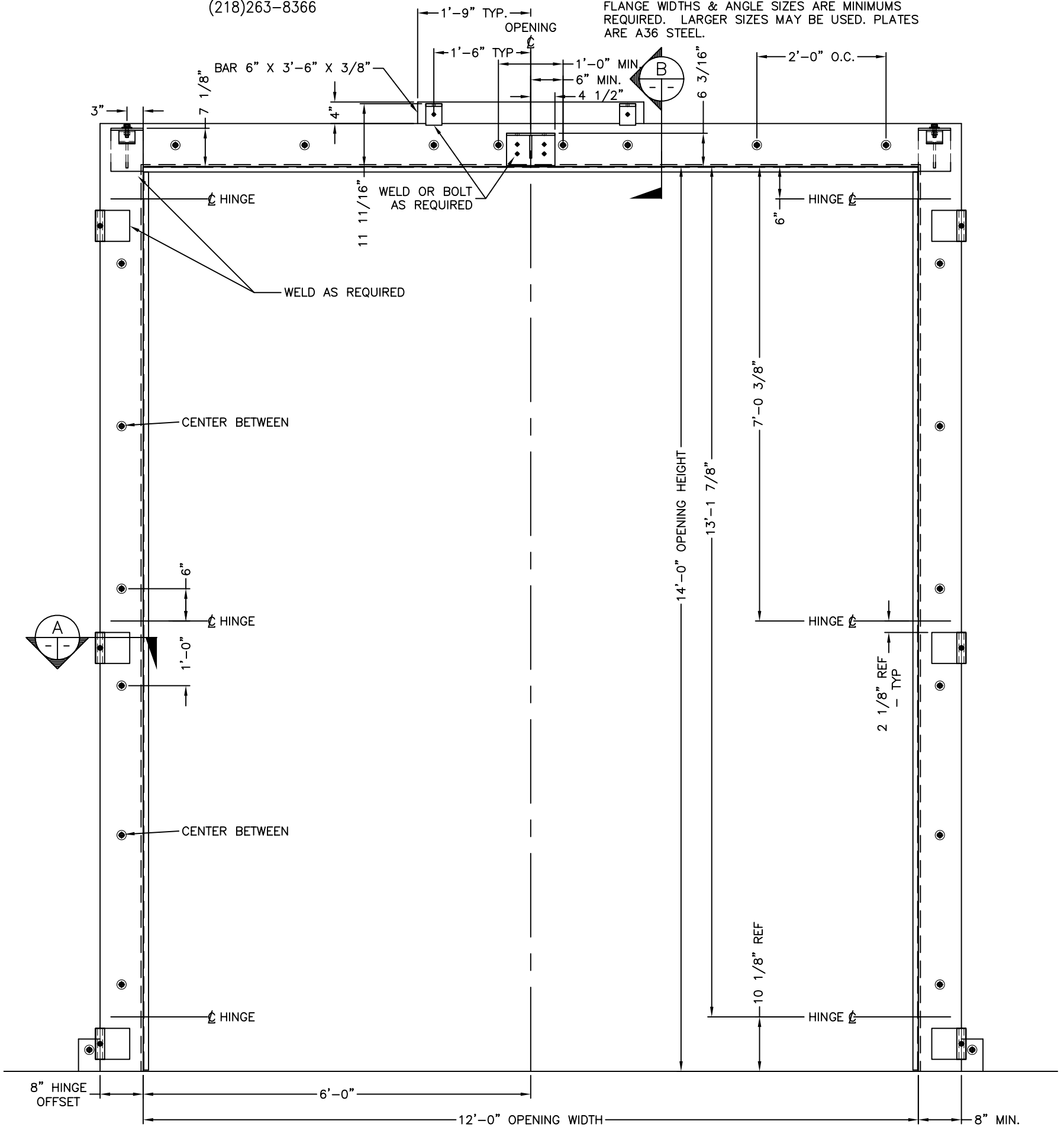
SECTION B



Engineering in motion

522 West 27th Street, Hibbing, Minnesota 55746
(218)263-8366

ELECTRIC FOUR-FOLD TEMPLATE
FOR 3" THICK W/S-BEAM TRACK
12'-0"W X 14'-0"H
FASTENED TO CMU WALL
CORE TO BE FILLED WITH 3/8"Ø MAX. SIZE
AGGREGATE WITH 3,000 PSI CONCRETE WITH 7" TO
9" SLUMP.
FILL 1 BLOCK BEYOND THE STEEL PLATE AND 2
ROWS ABOVE & BELOW ALL STEEL.
DO NOT HAVE AN ANCHOR CLOSER THAN 3" TO
EDGE OF CONCRETE.
CONCRETE TO CURE A MINIMUM OF 7 DAYS BEFORE
ANCHORING.
ANCHOR SYSTEM SHOWN IS DESIGNED TO RESIST
THE LOADING SHOWN ON DRAWING ONLY. OTHER LOADS
OR CONSIDERATIONS FOR THE FRAME MUST BE
DESIGNED BY A STRUCTURAL ENGINEER.
FLANGE WIDTHS & ANGLE SIZES ARE MINIMUMS
REQUIRED. LARGER SIZES MAY BE USED. PLATES
ARE A36 STEEL.



FRAME TEMPLATE & HARDWARE PLACEMENT

HINGE SIDE ELEVATION
8" HINGE OFFSET, STEEL FRAME ON CMU