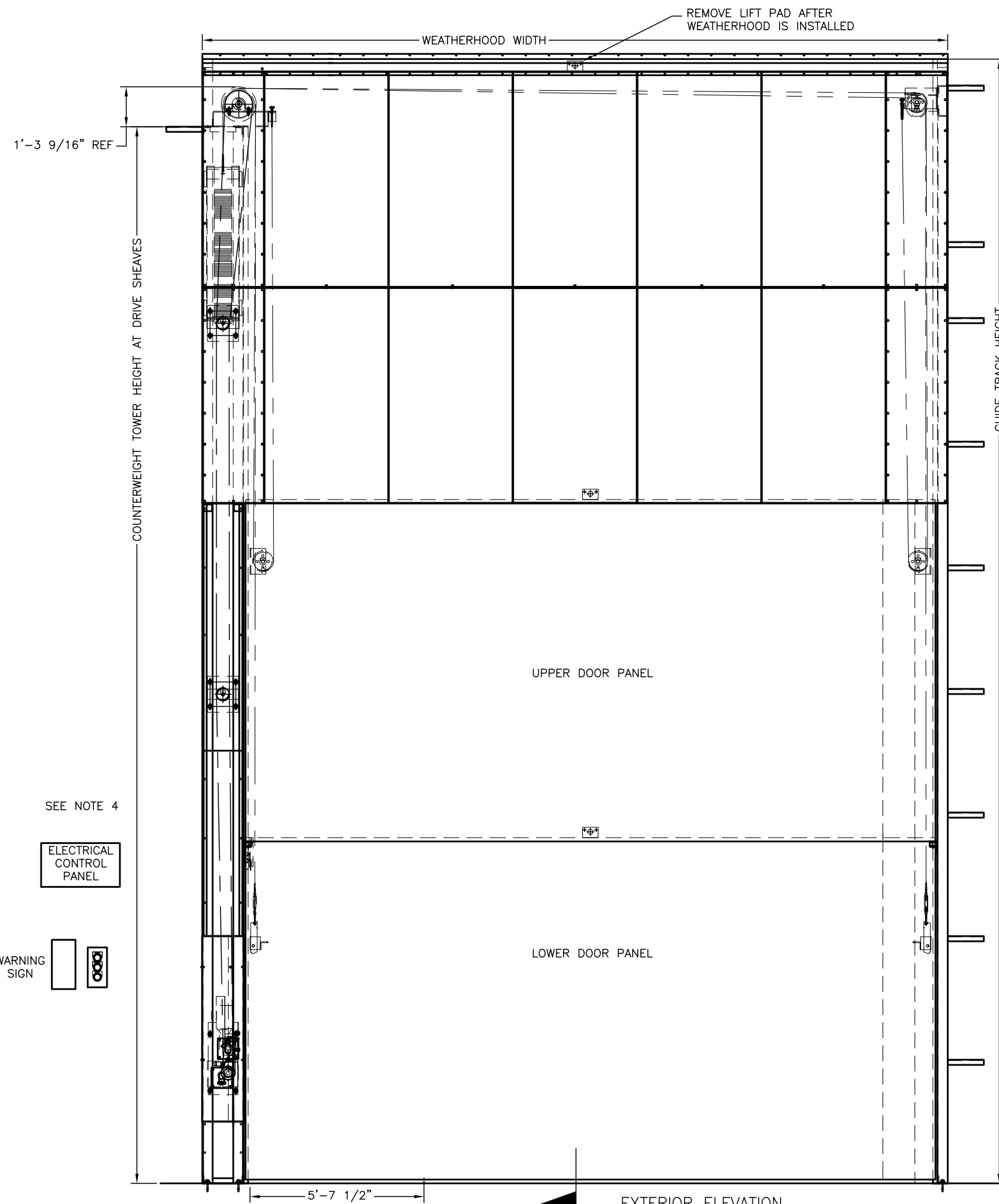
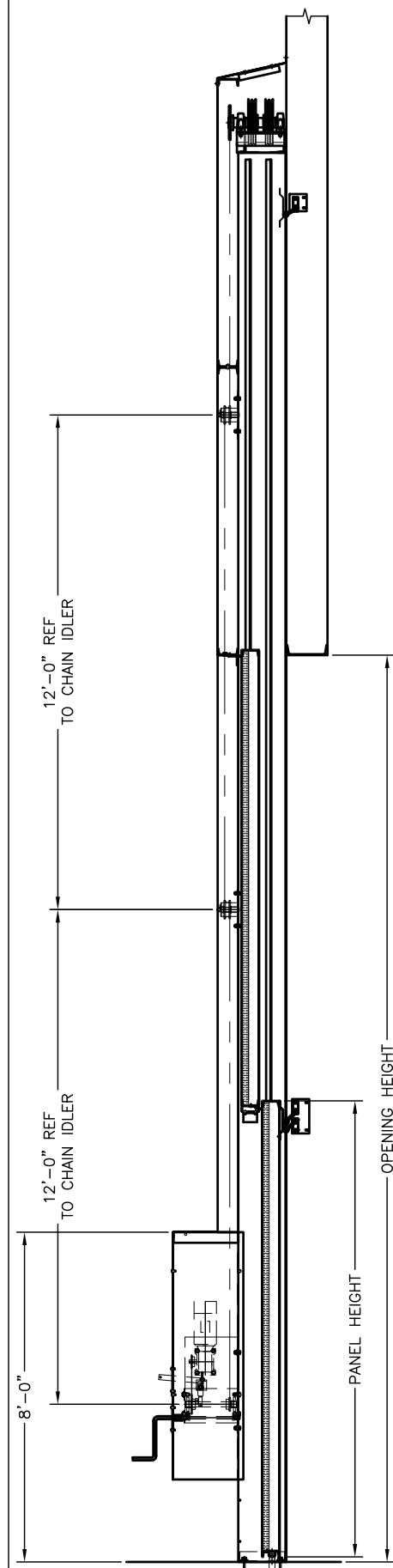


LIMIT UNLESS OTHERWISE NOTED
 FRACT.±1/16" DEC.DIM.±.010 ANGULAR±1°

THE DRAWING IS LOANED WITH THE EXPRESSED AGREEMENT THAT THE DRAWING AND INFORMATION THEREIN CONTAINED ARE THE PROPERTY OF ELECTRIC POWER DOOR AND WILL NOT BE REPRODUCED OR COPIED IN WHOLE OR IN PART NOR USED FOR THE FABRICATION OR CONSTRUCTION OF MATERIALS EXCEPT UPON THE WRITTEN PERMISSION OF ELECTRIC POWER DOOR FIRST OBTAINED AND SPECIFIC AS TO USE. THE ACCEPTANCE OF THIS DRAWING WILL BE CONSTRUED AS THE ACCEPTANCE OF THE FOREGOING AGREEMENT.

THIS DRAWING CONTAINS FIELD INSTALLED PARTS & INSTALLATION DETAILS

LEVEL = AA
 WORK CENTER = 100
 OPERATION = 600



SEE NOTE 4

ELECTRICAL CONTROL PANEL

WARNING SIGN

- NOTE:
1. ALL STEEL SURFACES CAN BE PRIMED OR PRIMED AND FINISH PAINTED PER THE CUSTOMER SPECS.
 2. LOCATION, MOUNTING, AND FIELD WIRING OF ALL ELECTRICAL CONTROLS, INCLUDING THE SUPPLY AND INSTALLATION OF ALL NECESSARY CONDUIT AND JUNCTION BOXES, IS NOT BY ELECTRIC POWER DOOR.
 3. PANEL THICKNESS AND CWT TOWER SIZING DEPEND UPON THE OPENING SIZE AND LOADING REQUIREMENTS

FOR PROJECT SPECIFIC DIMENSIONS, PLEASE CONSULT THE FACTORY



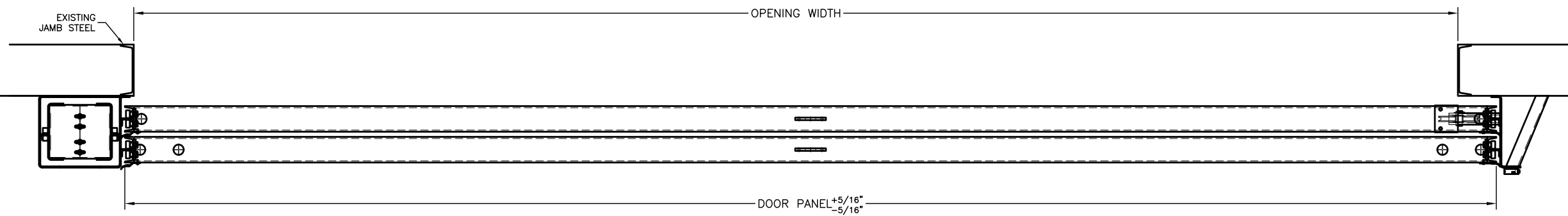
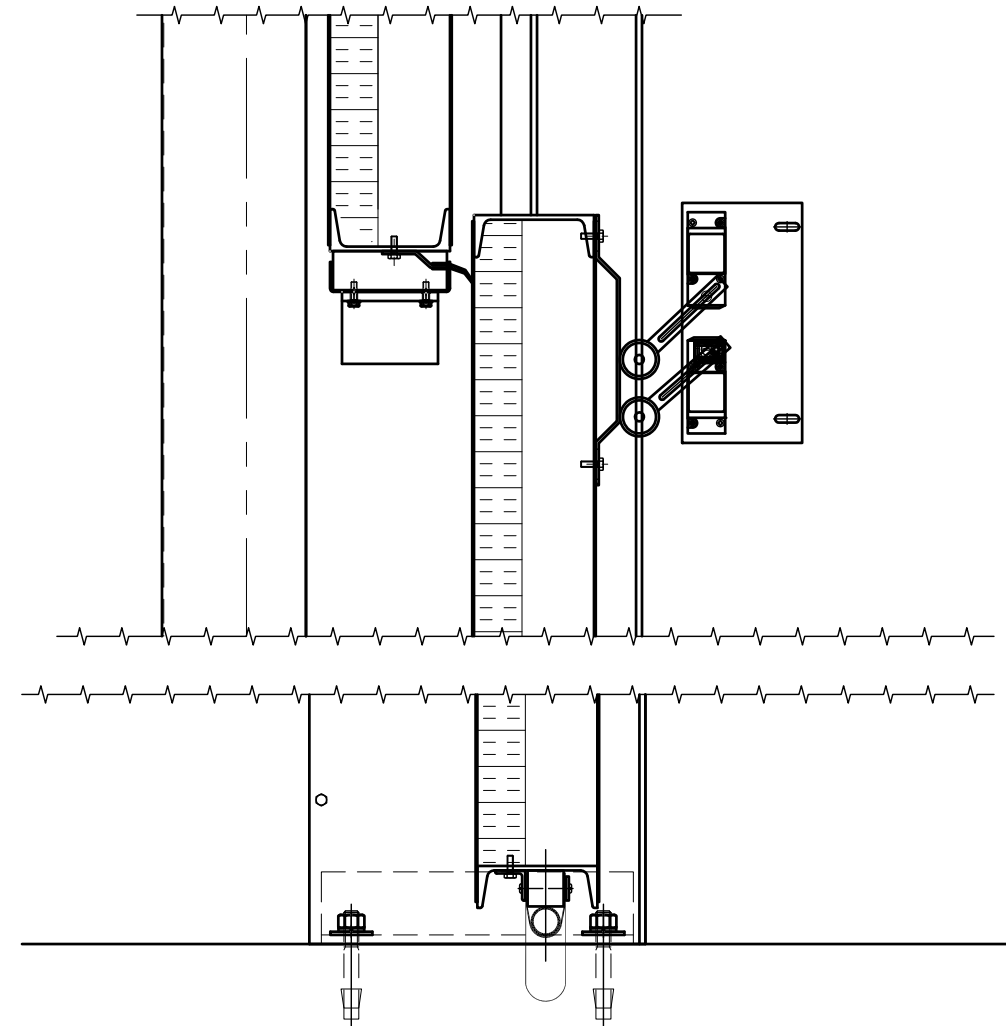
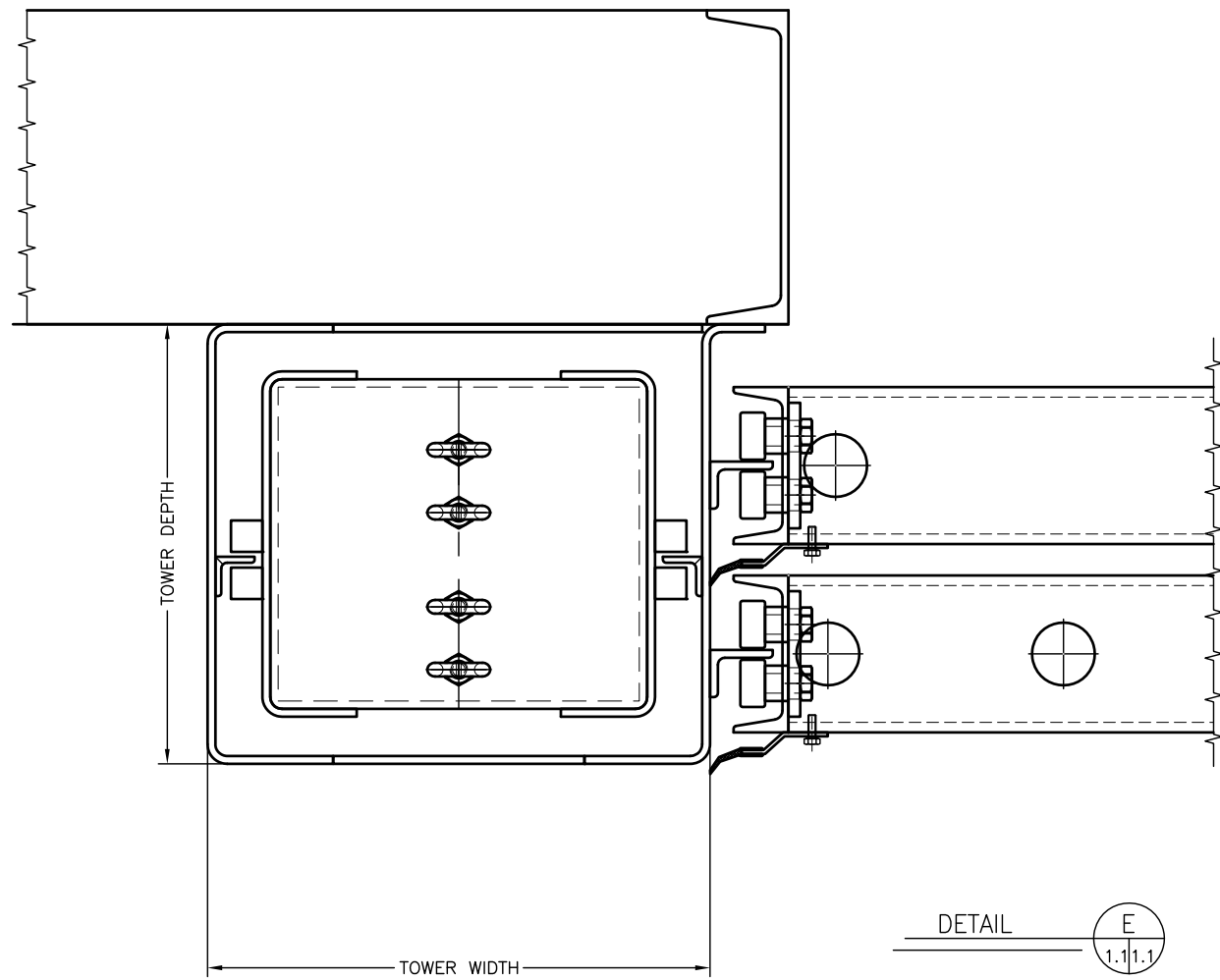
Engineering in motion

522 West 27th Street, Hibbing, Minnesota 55746
 (218)263-8366

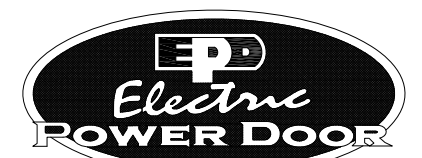
LIMIT UNLESS OTHERWISE NOTED
 FRACT.±1/16" DEC.DIM.±.010 ANGULAR±1°
 THE DRAWING IS LOANED WITH THE EXPRESSED
 AGREEMENT THAT THE DRAWING AND INFORMATION
 THEREIN CONTAINED ARE THE PROPERTY OF ELECTRIC
 POWER DOOR AND WILL NOT BE REPRODUCED OR
 COPIED IN WHOLE OR IN PART NOR USED FOR THE
 FABRICATION OR CONSTRUCTION OF MATERIALS EXCEPT
 UPON THE WRITTEN PERMISSION OF ELECTRIC POWER
 DOOR FIRST OBTAINED AND SPECIFIC AS TO USE. THE
 ACCEPTANCE OF THIS DRAWING WILL BE CONSTRUED AS
 THE ACCEPTANCE OF THE FOREGOING AGREEMENT.

THIS DRAWING CONTAINS FIELD INSTALLED
 PARTS & INSTALLATION DETAILS

LEVEL = AA
 WORK CENTER = 100
 OPERATION = 600



BRACE TO BUILDING COLUMN
 OR GIRT AT APPROXIMATELY
 4'-0" ON CENTER FULL HEIGHT
 OF TRACK AND TOWER



Engineering in motion

522 West 27th Street, Hibbing, Minnesota 55746
 (218)263-8366