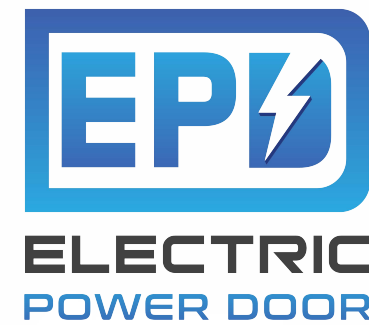


LIMIT UNLESS OTHERWISE NOTED  
FRACT.±1/16" DEC.DIM.±.010 ANGULAR±1°

THE DRAWING IS LOANED WITH THE EXPRESSED AGREEMENT THAT THE DRAWING AND INFORMATION THEREIN CONTAINED ARE THE PROPERTY OF ELECTRIC POWER DOOR AND WILL NOT BE REPRODUCED OR COPIED IN WHOLE OR IN PART NOR USED FOR THE FABRICATION OR CONSTRUCTION OF MATERIALS EXCEPT UPON THE WRITTEN PERMISSION OF ELECTRIC POWER DOOR FIRST OBTAINED AND SPECIFIC AS TO USE. THE ACCEPTANCE OF THIS DRAWING WILL BE CONSTRUED AS THE ACCEPTANCE OF THE FOREGOING AGREEMENT.

THIS DRAWING CONTAINS FIELD INSTALLED PARTS & INSTALLATION DETAILS

LEVEL = AA  
WORK CENTER = 100  
OPERATION = 600

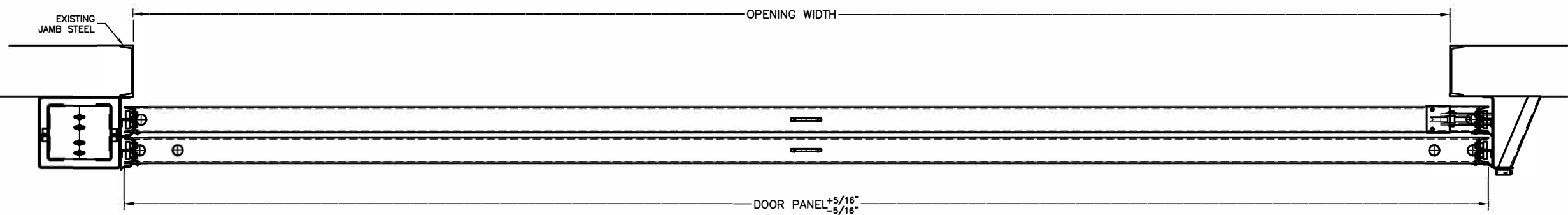
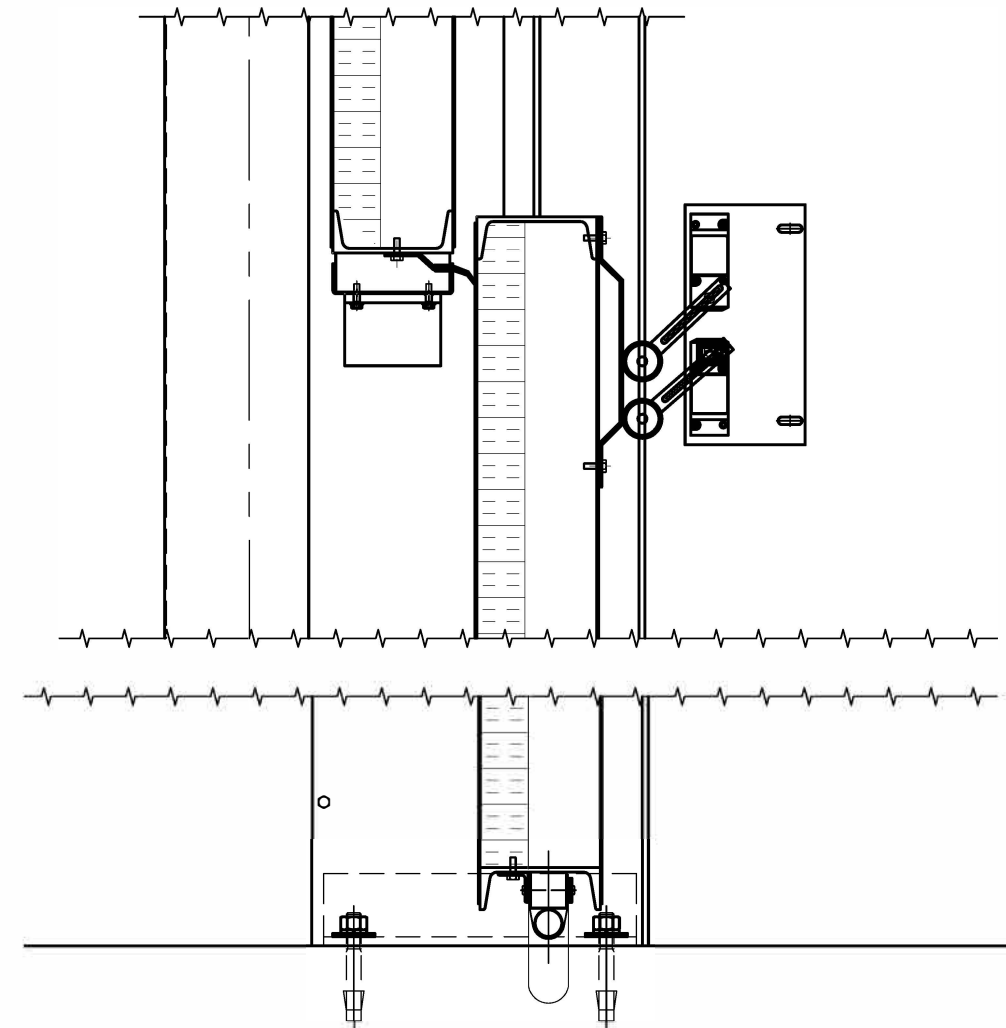
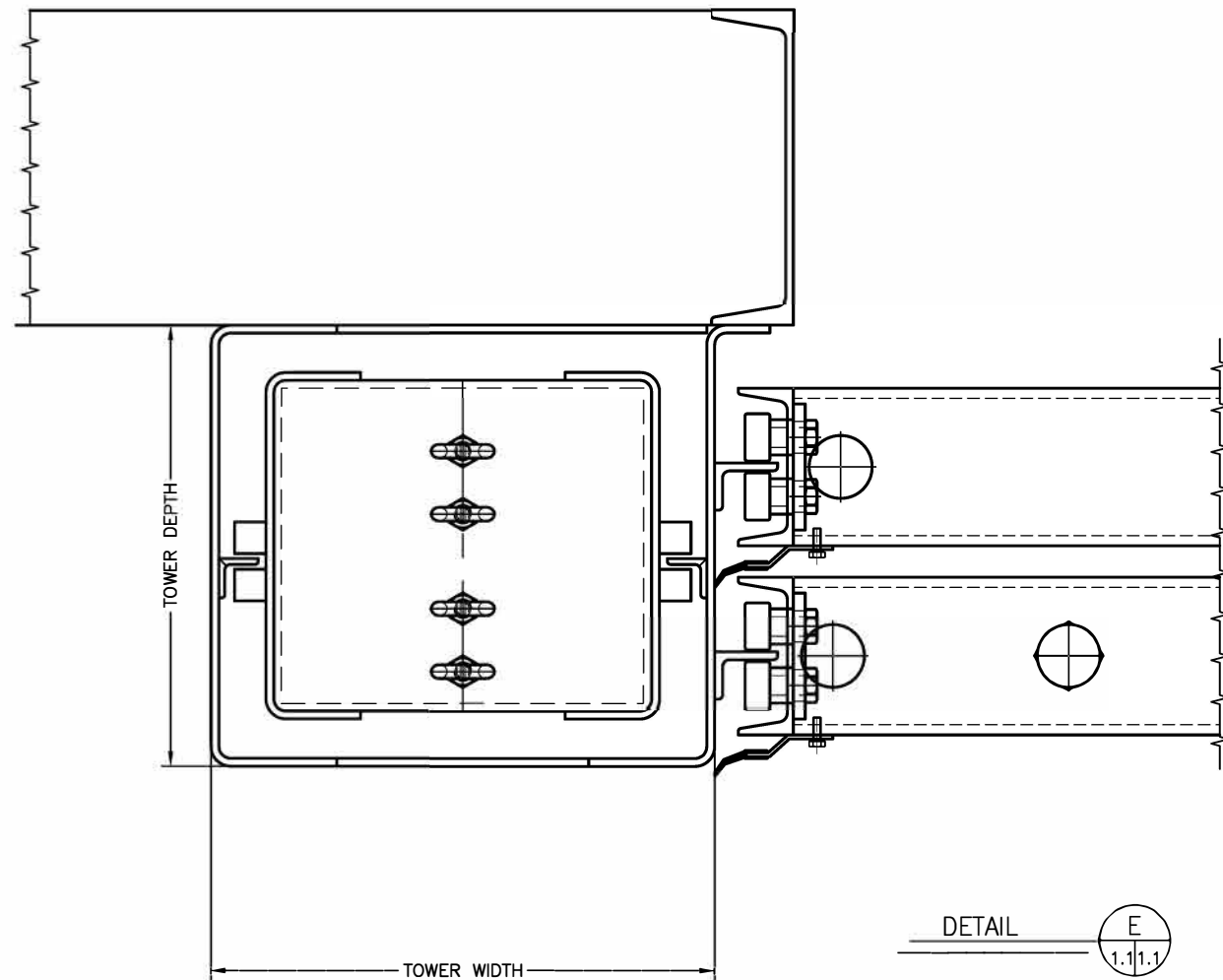


522 West 27th Street, Hibbing, Minnesota 55746  
(218)263-8366

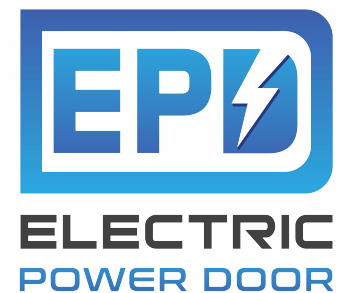
LIMIT UNLESS OTHERWISE NOTED  
 FRACT.±1/16" DEC.DIM.±.010 ANGULAR±1°  
 THE DRAWING IS LOANED WITH THE EXPRESSED  
 AGREEMENT THAT THE DRAWING AND INFORMATION  
 THEREIN CONTAINED ARE THE PROPERTY OF ELECTRIC  
 POWER DOOR AND WILL NOT BE REPRODUCED OR  
 COPIED IN WHOLE OR IN PART NOR USED FOR THE  
 FABRICATION OR CONSTRUCTION OF MATERIALS EXCEPT  
 UPON THE WRITTEN PERMISSION OF ELECTRIC POWER  
 DOOR FIRST OBTAINED AND SPECIFIC AS TO USE. THE  
 ACCEPTANCE OF THIS DRAWING WILL BE CONSTRUED AS  
 THE ACCEPTANCE OF THE FOREGOING AGREEMENT.

THIS DRAWING CONTAINS FIELD INSTALLED  
 PARTS & INSTALLATION DETAILS

LEVEL = AA  
 WORK CENTER = 100  
 OPERATION = 600



BRACE TO BUILDING COLUMN  
 OR GIRT AT APPROXIMATELY  
 4'-0" ON CENTER FULL HEIGHT  
 OF TRACK AND TOWER



522 West 27th Street, Hibbing, Minnesota 55746  
 (218)263-8366