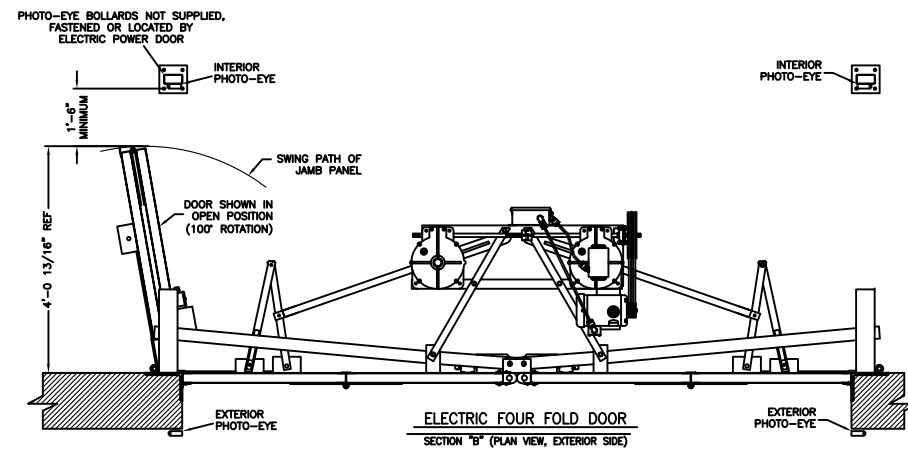


Engineering in motion

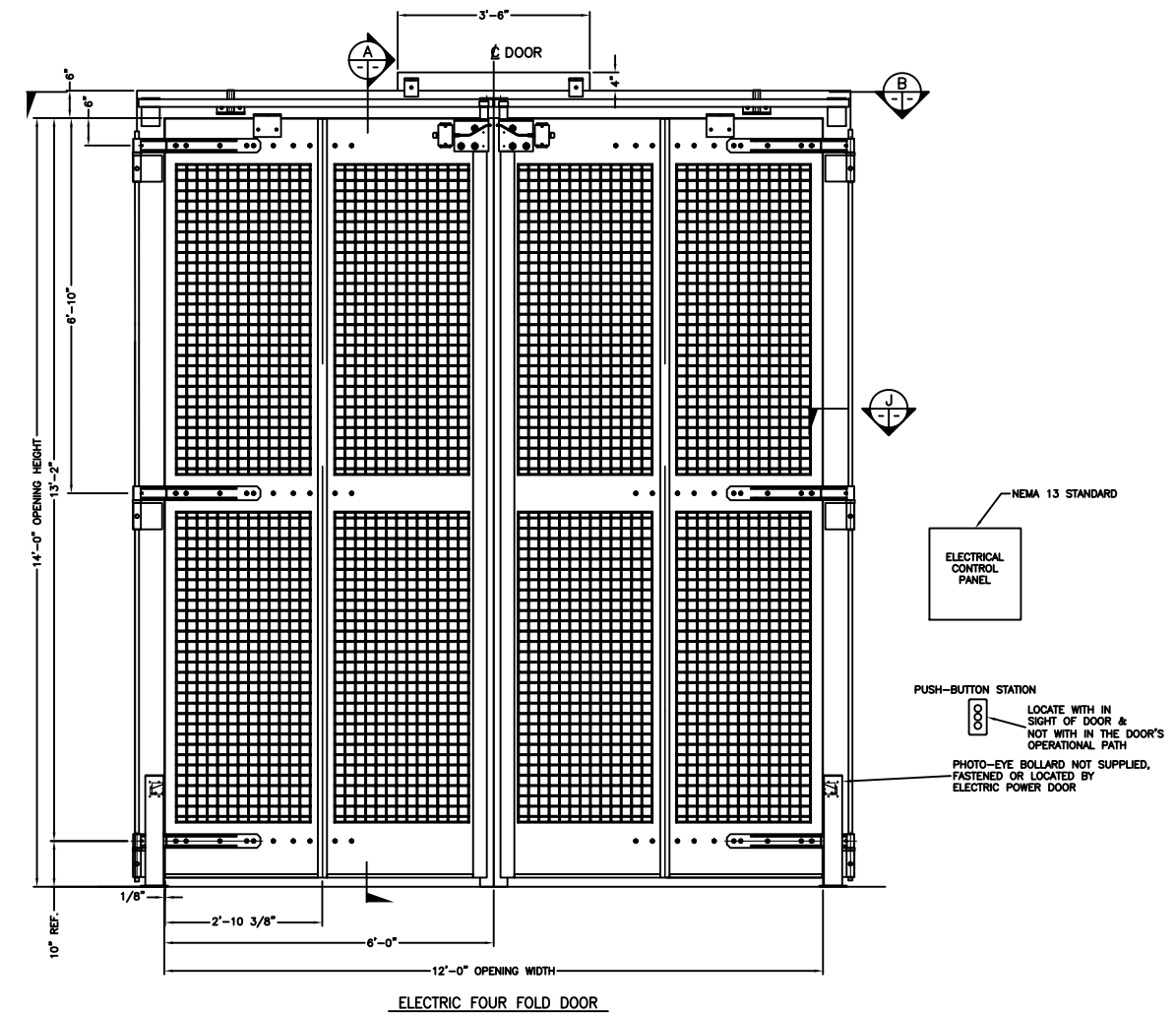
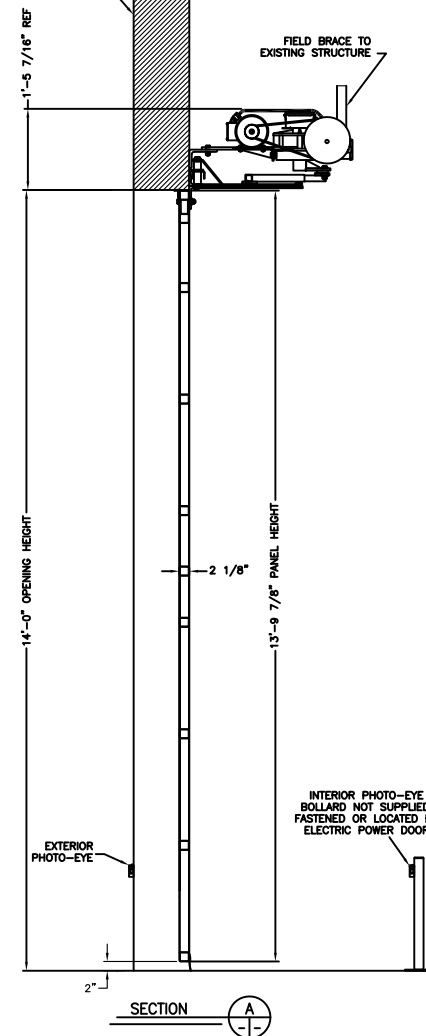
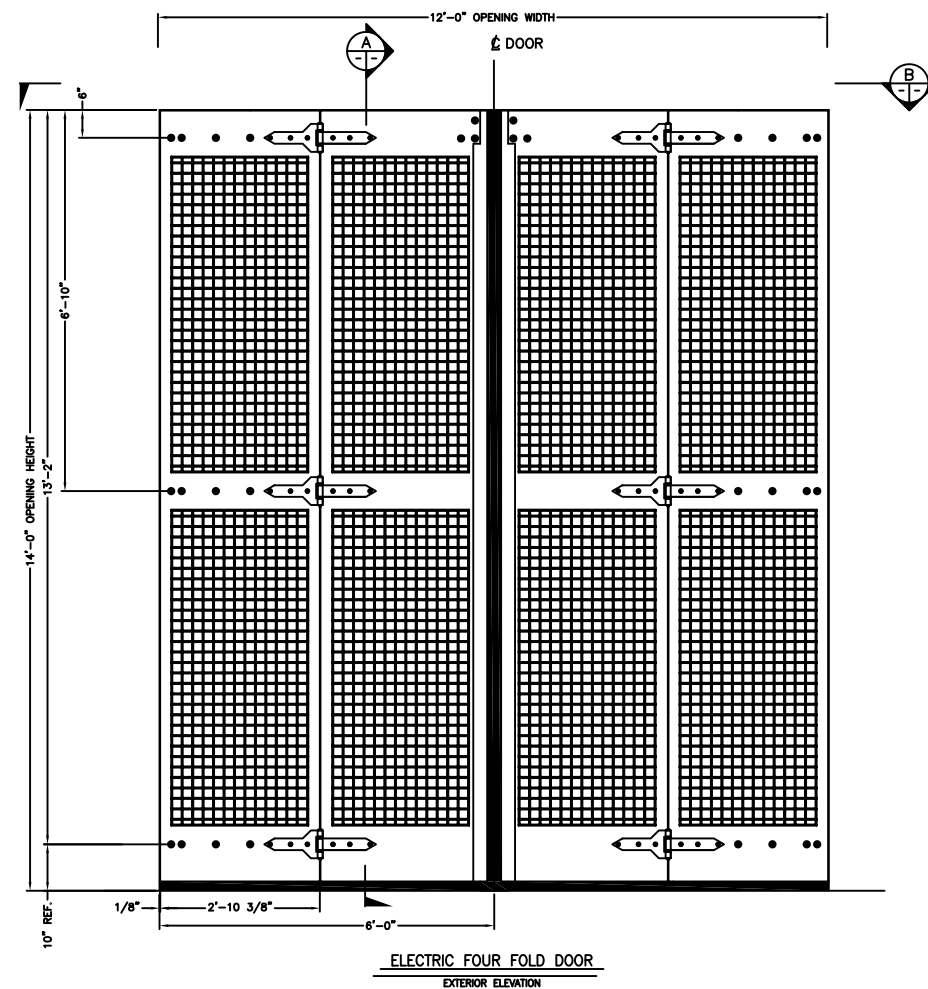
522 West 27th Street, Hibbing, Minnesota 55746
(218)263-8366

1/4" MESH, MODEL 47 ELECTRICALLY OPERATED FOUR FOLD DOOR

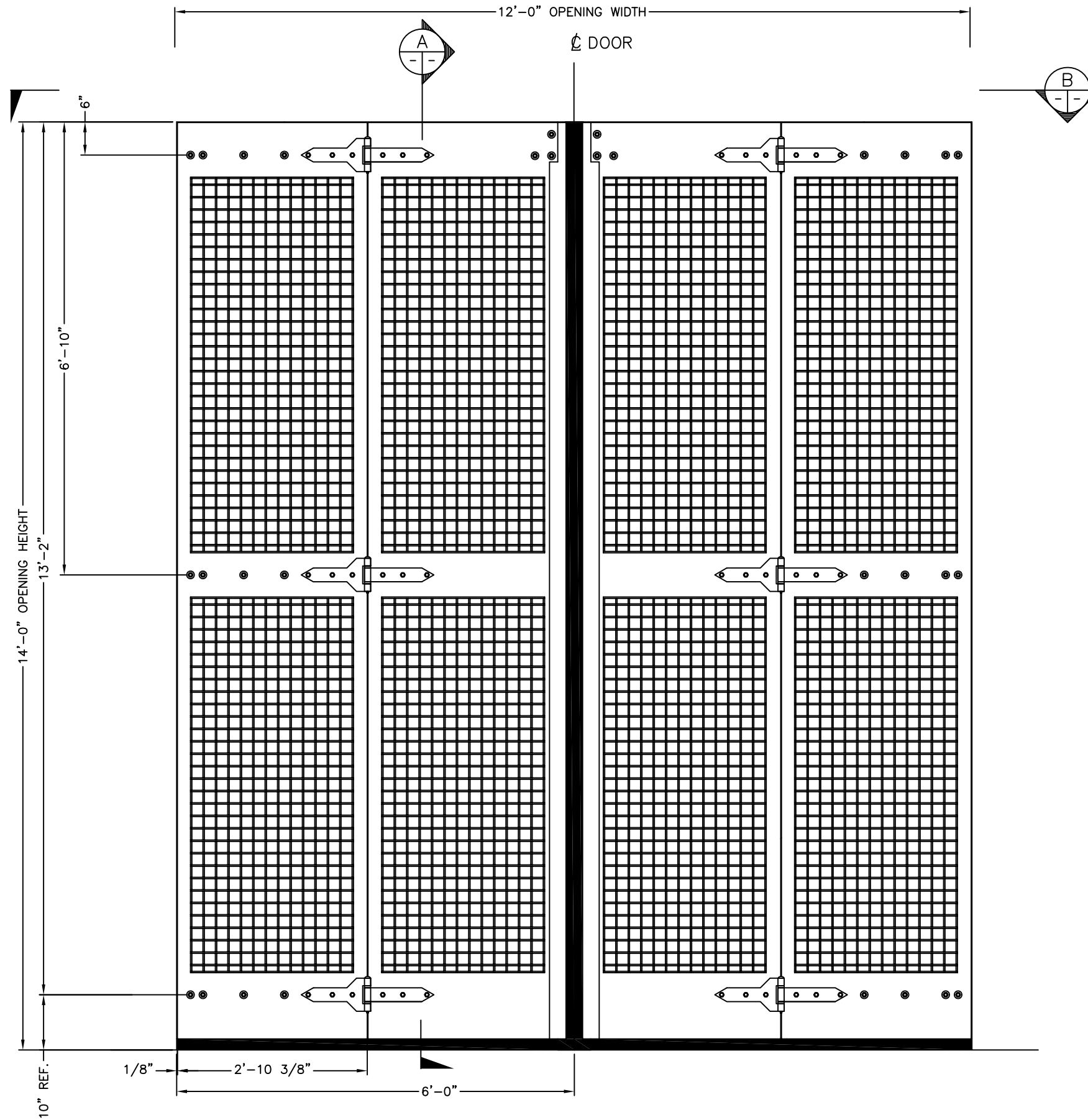


BUILDING STRUCTURE
REF - NOT BY EPD
REFER TO EPD MOUNTING
TEMPLATES FOR VARIOUS
BUILDING CONSTRUCTIONS

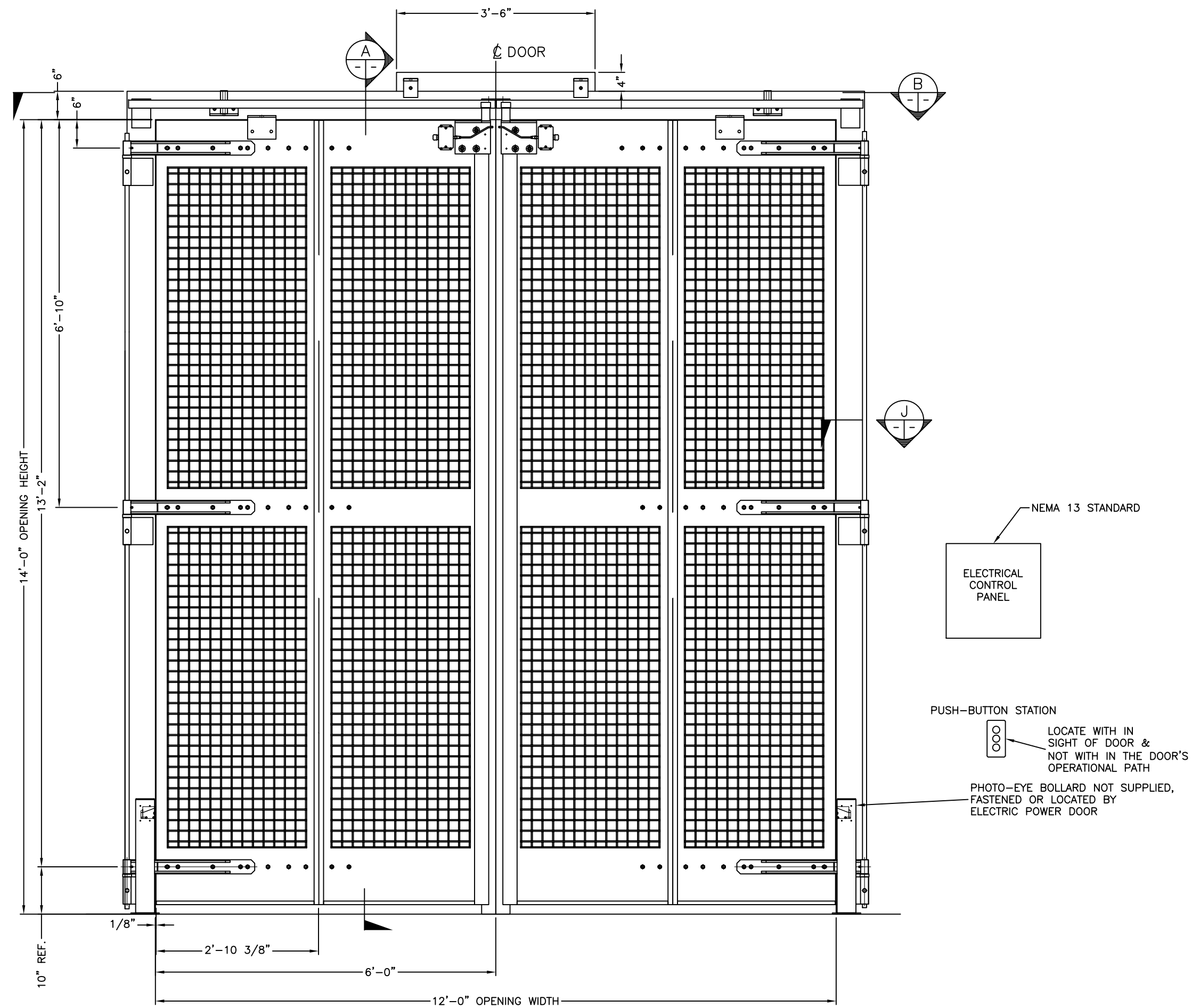
FIELD BRACE TO
EXISTING STRUCTURE



DATE
M
G
S

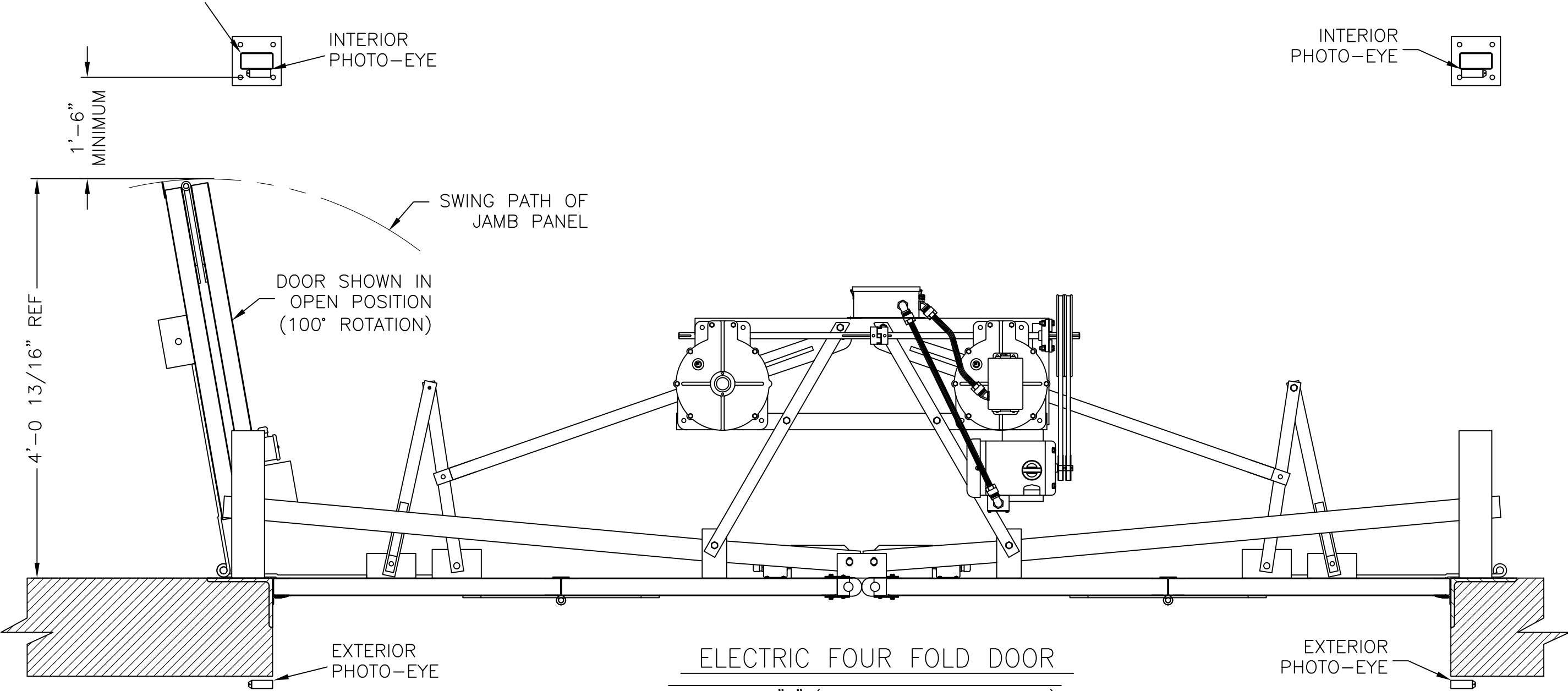


ELECTRIC FOUR FOLD DOOR
EXTERIOR ELEVATION



ELECTRIC FOUR FOLD DOOR

PHOTO-EYE BOLLARDS NOT SUPPLIED,
FASTENED OR LOCATED BY
ELECTRIC POWER DOOR



ELECTRIC FOUR FOLD DOOR
SECTION "B" (PLAN VIEW, EXTERIOR SIDE)

BUILDING STRUCTURE
REF - NOT BY EPD

REFER TO EPD MOUNTING
TEMPLATES FOR VARIOUS
BUILDING CONSTRUCTIONS

FIELD BRACE TO
EXISTING STRUCTURE

1'-5 7/16" REF

14'-0" OPENING HEIGHT

2 1/8"

13'-9 7/8" PANEL HEIGHT

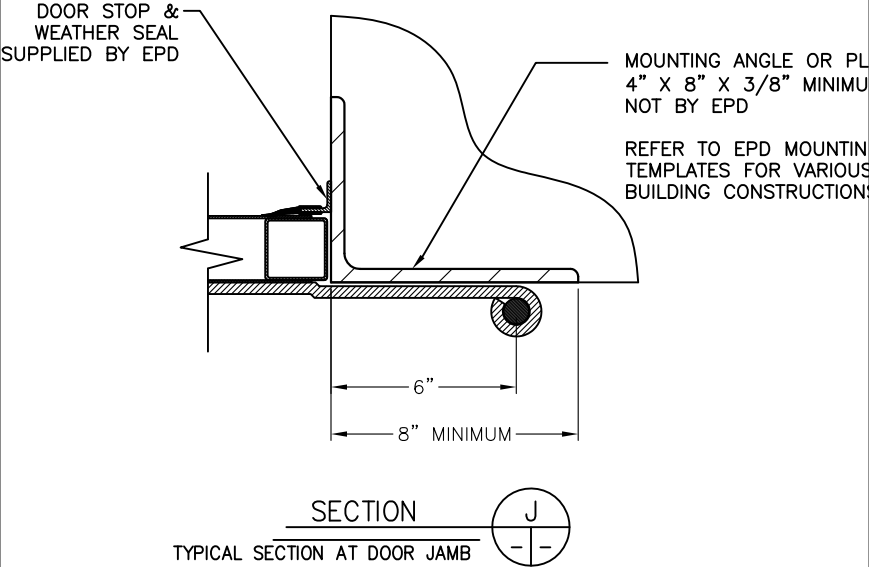
EXTERIOR
PHOTO-EYE

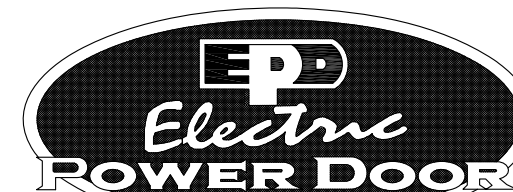
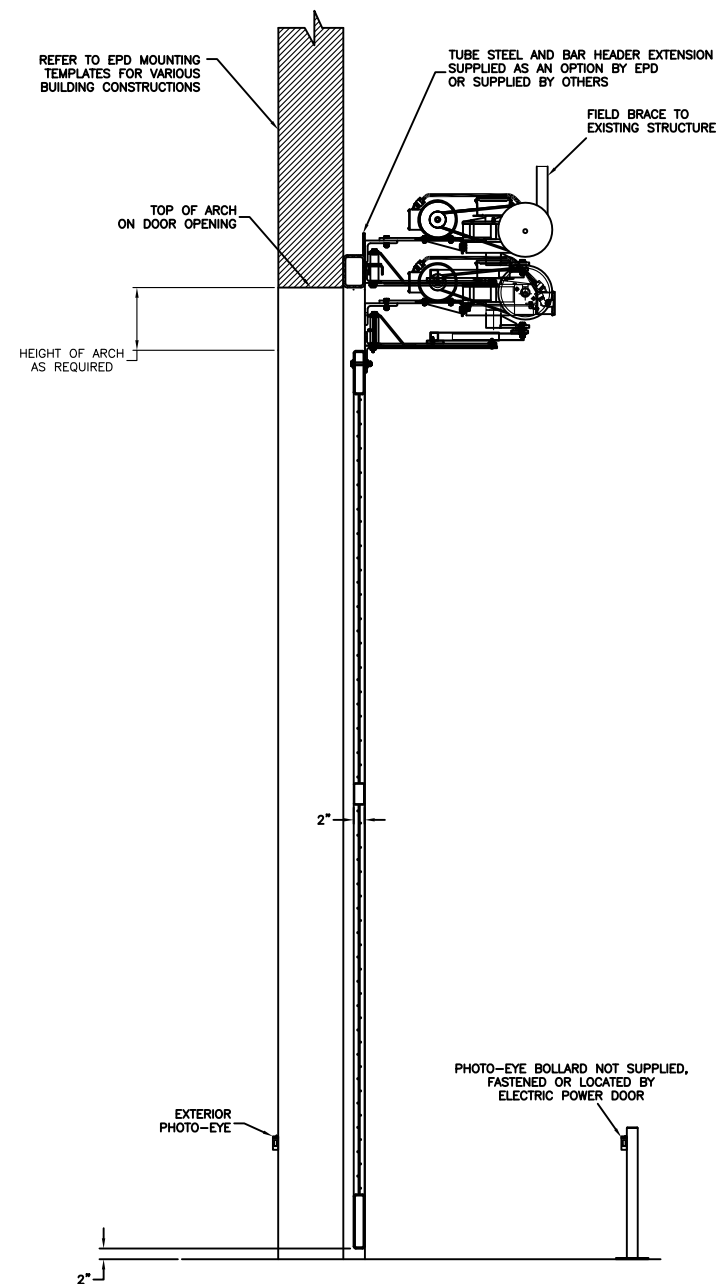
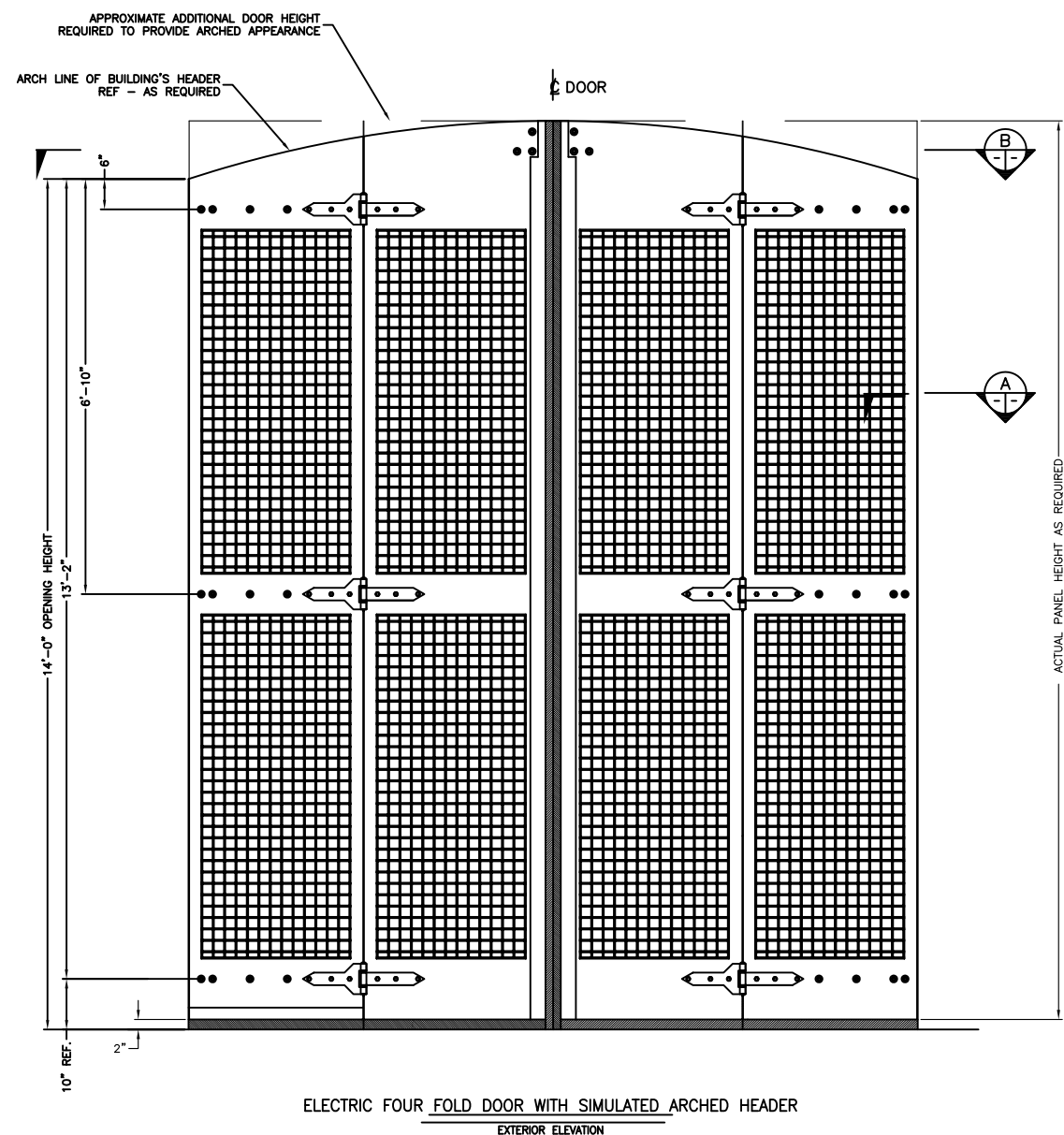
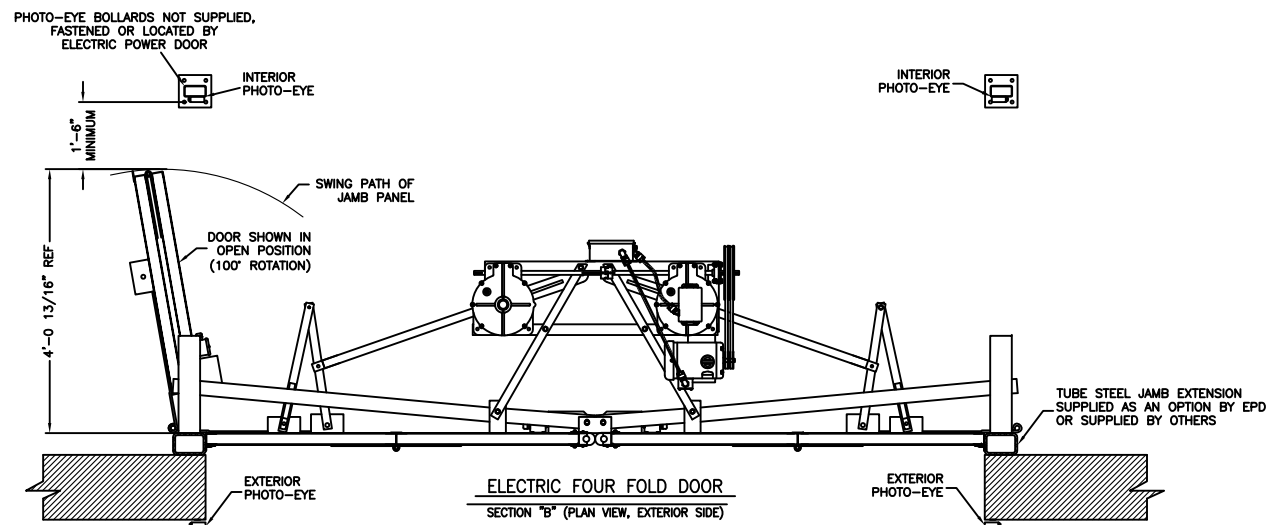
INTERIOR PHOTO-EYE
BOLLARD NOT SUPPLIED,
FASTENED OR LOCATED BY
ELECTRIC POWER DOOR

2"

SECTION





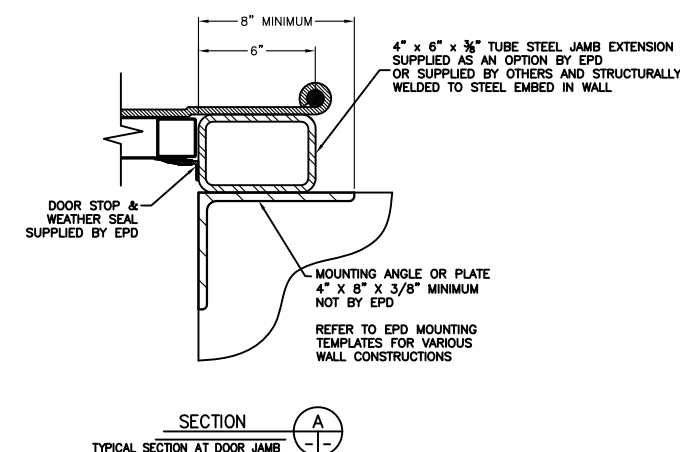


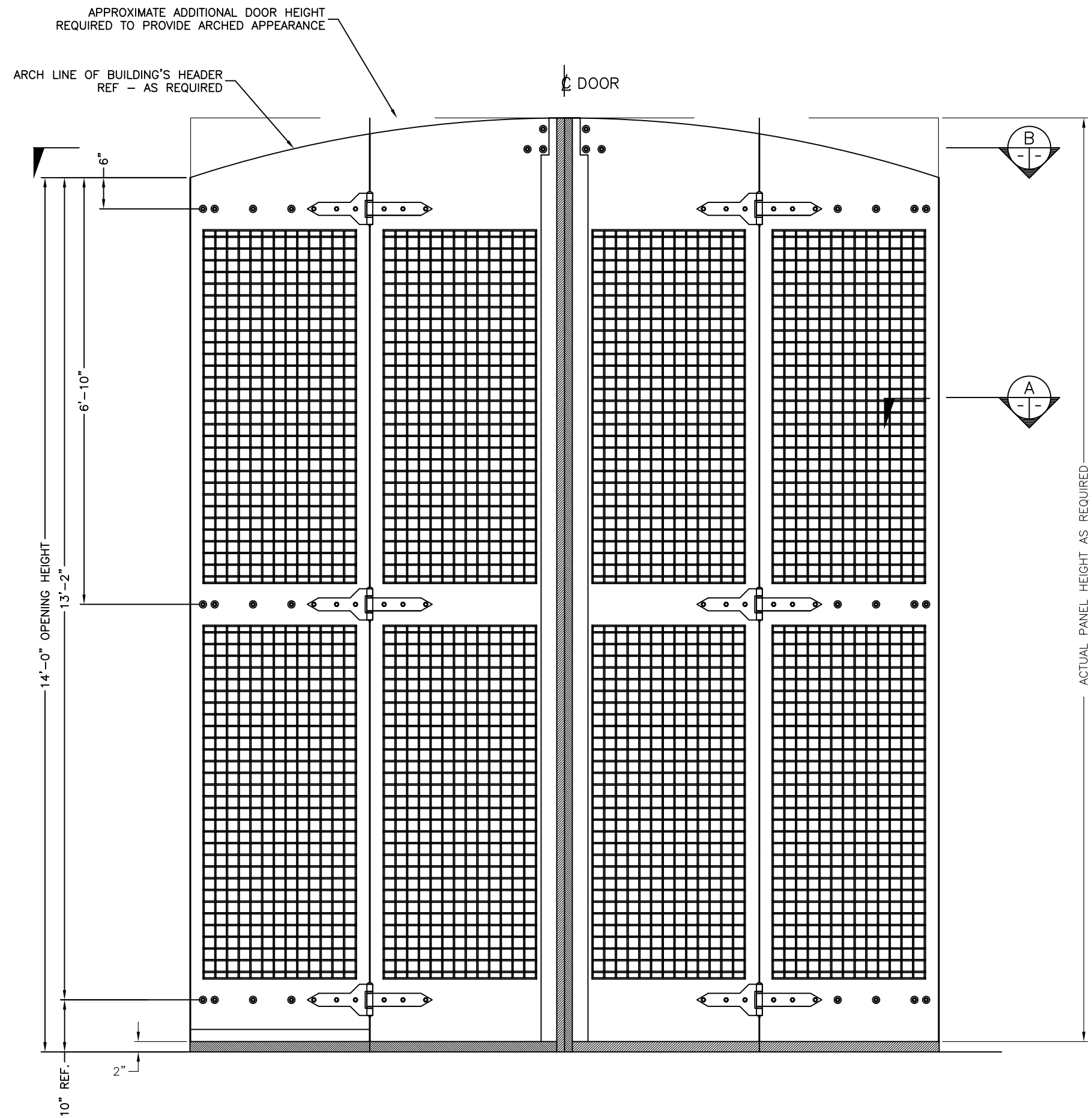
Engineering in motion

522 West 27th Street, Hibbing, Minnesota 55746
(218)263-8366

1" MESH, MODEL 47 ELECTRICALLY OPERATED FOUR FOLD DOOR

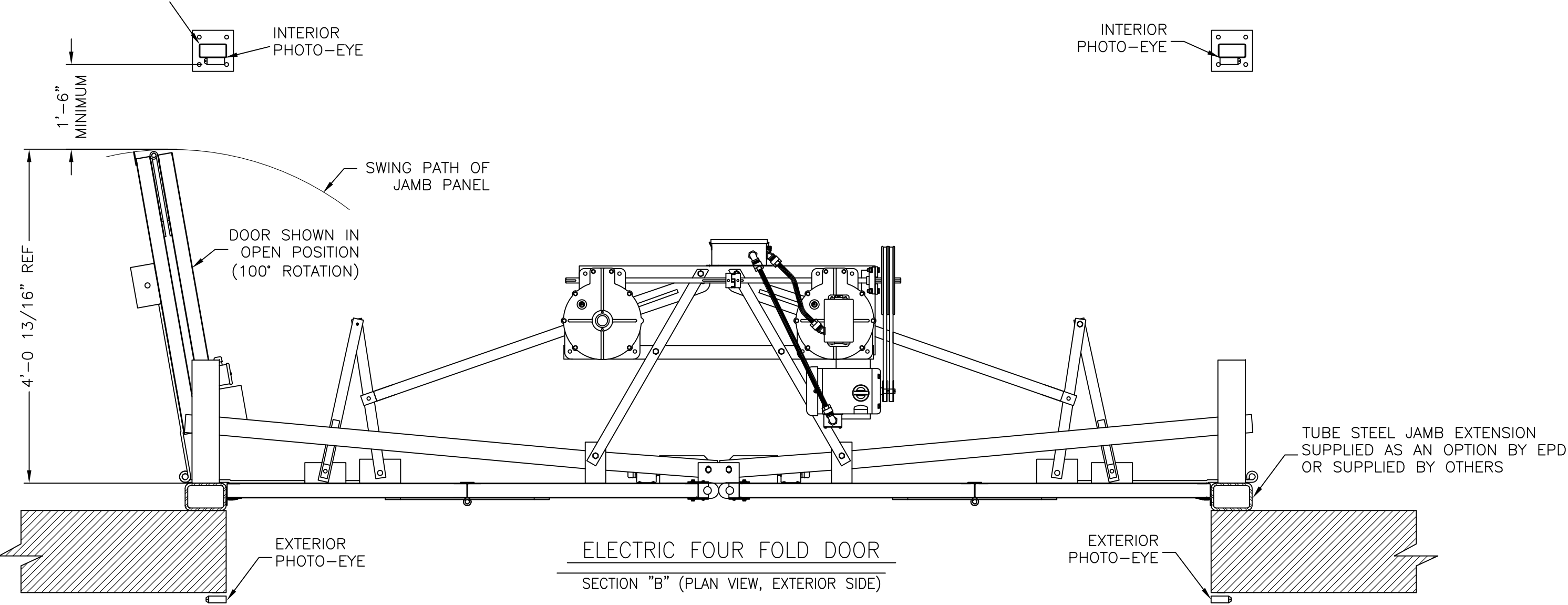
SHOWN WITH A SIMULATED
ARCHED HEADER
AND
TUBE STEEL JAMB EXTENSIONS

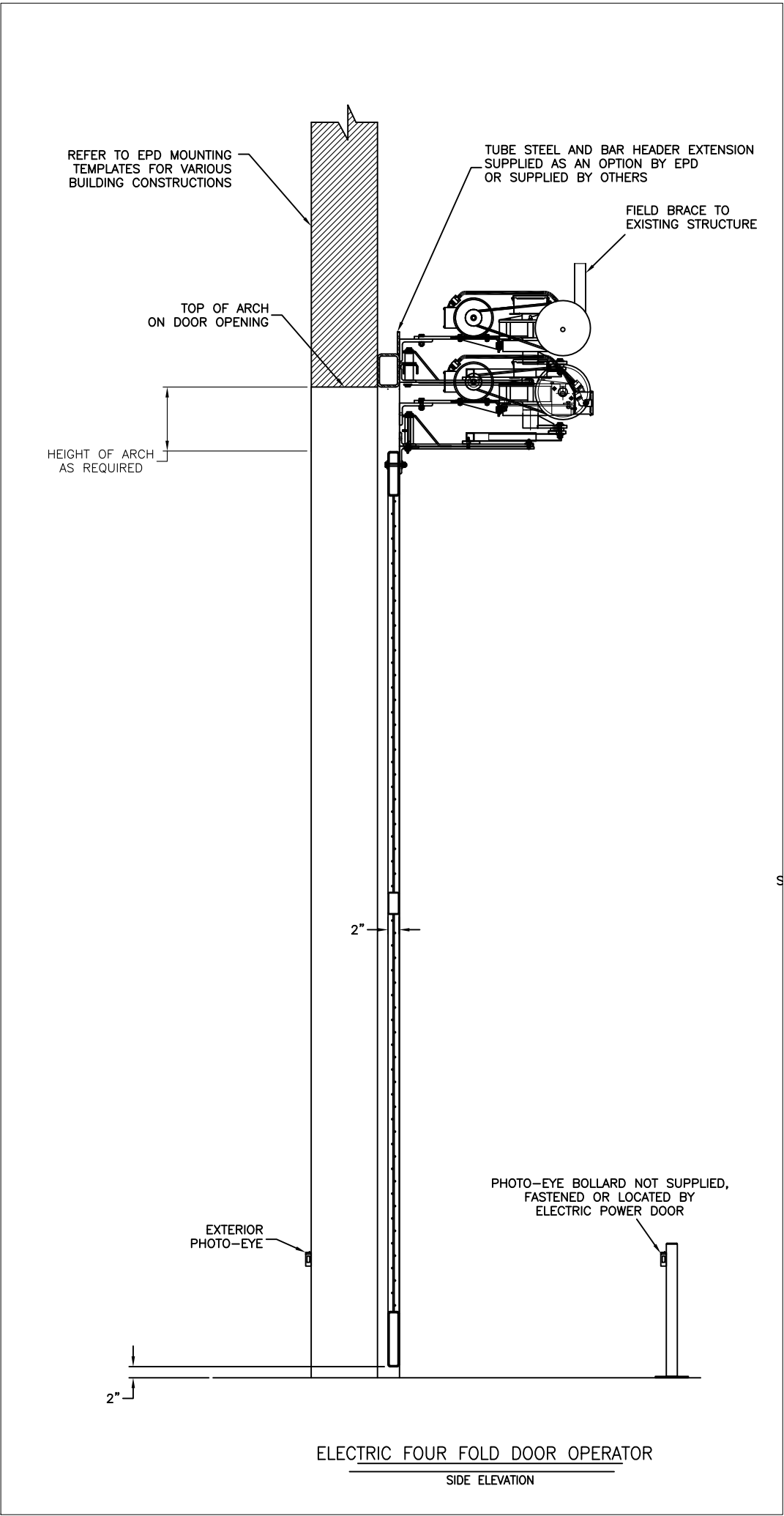


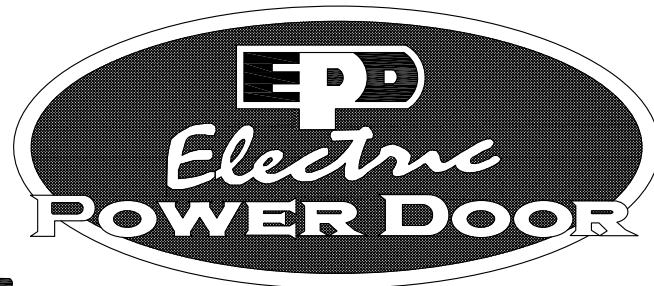


ELECTRIC FOUR FOLD DOOR WITH SIMULATED ARCHED HEADER
EXTERIOR ELEVATION

PHOTO-EYE BOLLARDS NOT SUPPLIED,
FASTENED OR LOCATED BY
ELECTRIC POWER DOOR





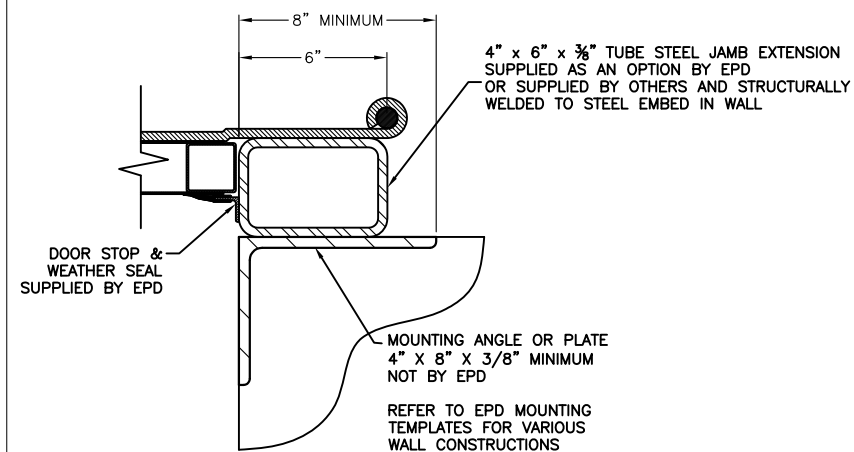


Engineering in motion

522 West 27th Street, Hibbing, Minnesota 55746
(218)263-8366

1" MESH, MODEL 47 ELECTRICALLY OPERATED FOUR FOLD DOOR

SHOWN WITH A SIMULATED
ARCHED HEADER
AND
TUBE STEEL JAMB EXTENSIONS



SECTION
TYPICAL SECTION AT DOOR JAMB